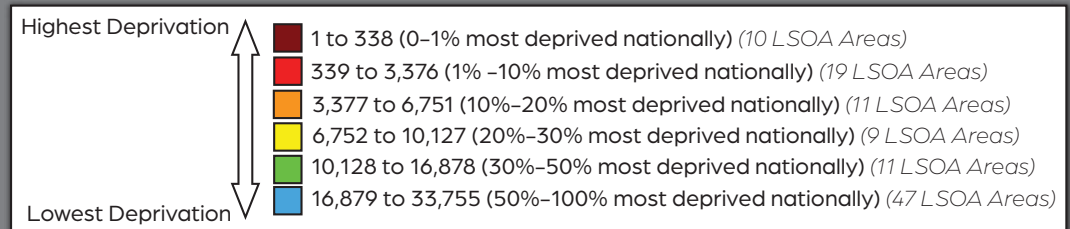


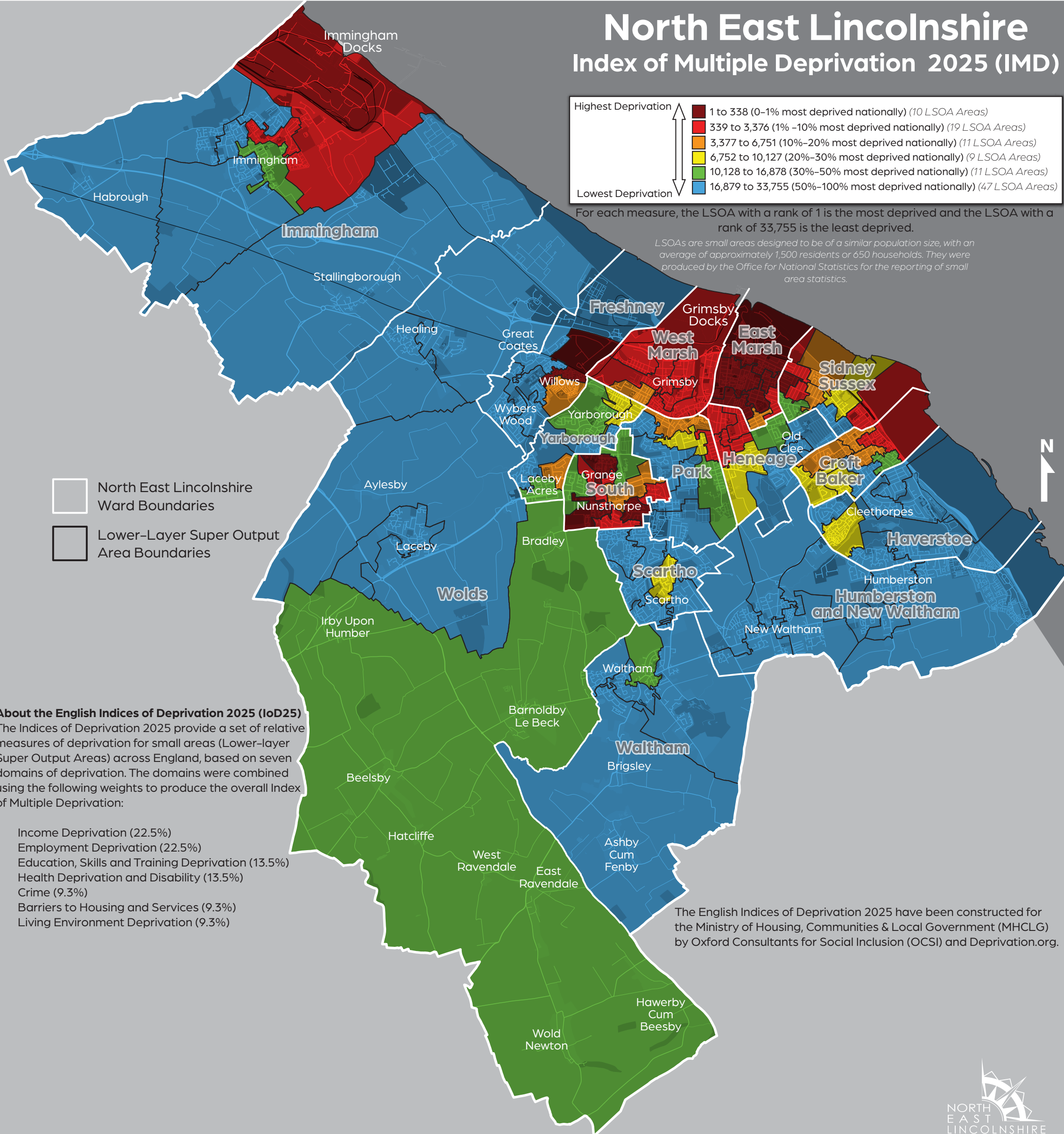
North East Lincolnshire

Index of Multiple Deprivation 2025 (IMD)



For each measure, the LSOA with a rank of 1 is the most deprived and the LSOA with a rank of 33,755 is the least deprived.

LSOAs are small areas designed to be of a similar population size, with an average of approximately 1,500 residents or 650 households. They were produced by the Office for National Statistics for the reporting of small area statistics.



North East Lincolnshire Ward Boundaries
 Lower-Layer Super Output Area Boundaries

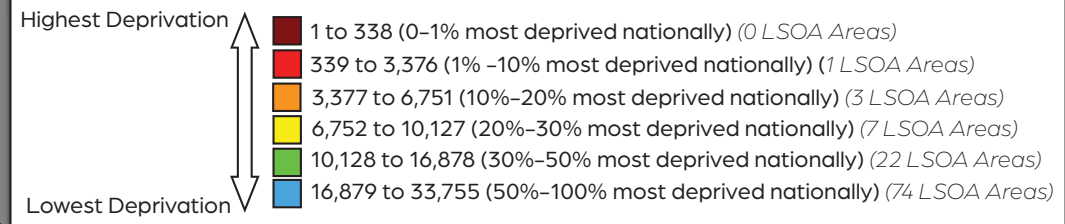
About the English Indices of Deprivation 2025 (IoD25)
 The Indices of Deprivation 2025 provide a set of relative measures of deprivation for small areas (Lower-layer Super Output Areas) across England, based on seven domains of deprivation. The domains were combined using the following weights to produce the overall Index of Multiple Deprivation:

- Income Deprivation (22.5%)
- Employment Deprivation (22.5%)
- Education, Skills and Training Deprivation (13.5%)
- Health Deprivation and Disability (13.5%)
- Crime (9.3%)
- Barriers to Housing and Services (9.3%)
- Living Environment Deprivation (9.3%)

The English Indices of Deprivation 2025 have been constructed for the Ministry of Housing, Communities & Local Government (MHCLG) by Oxford Consultants for Social Inclusion (OCSI) and Deprivation.org.

North East Lincolnshire

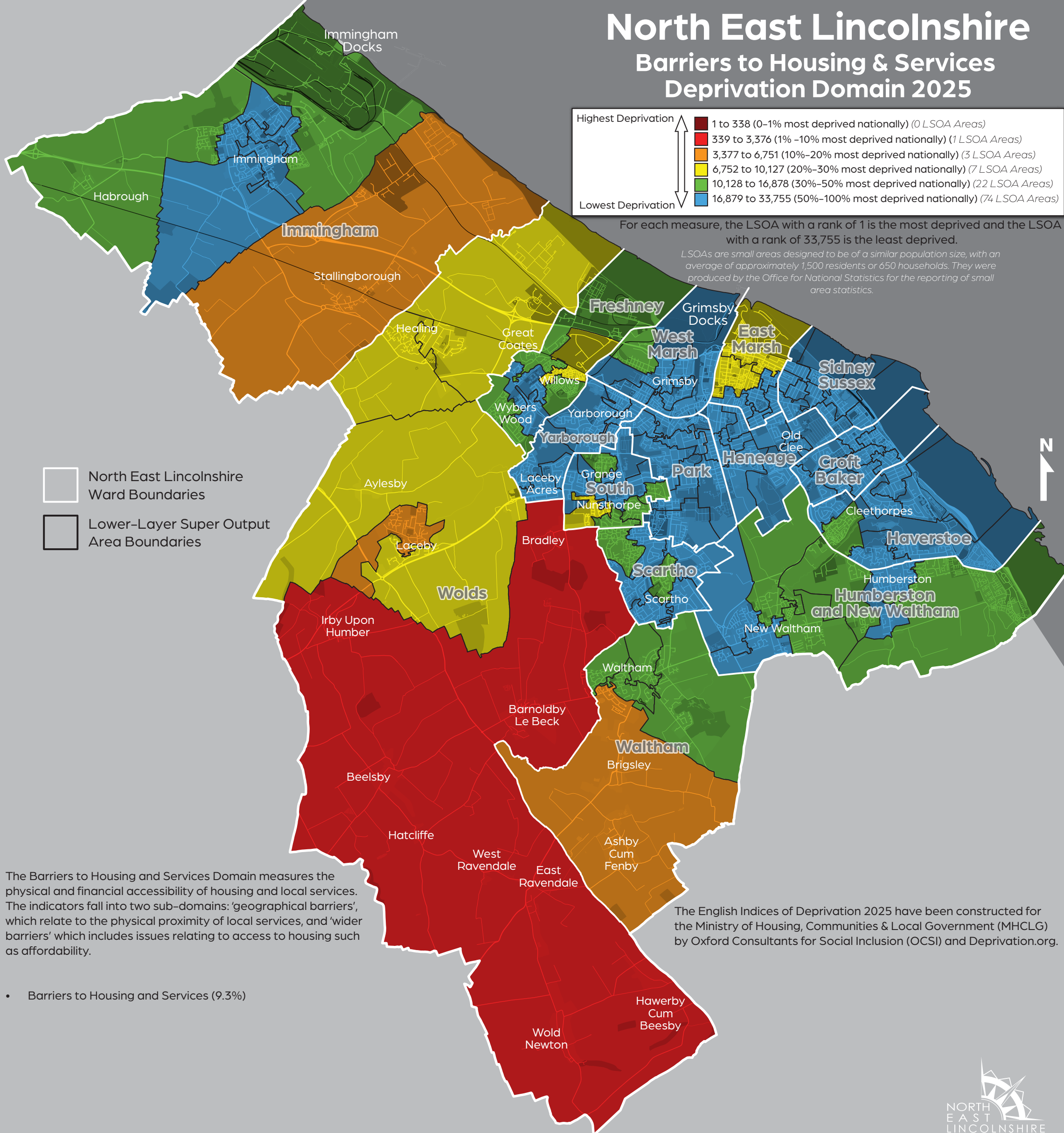
Barriers to Housing & Services Deprivation Domain 2025



For each measure, the LSOA with a rank of 1 is the most deprived and the LSOA with a rank of 33,755 is the least deprived.

LSOAs are small areas designed to be of a similar population size, with an average of approximately 1,500 residents or 650 households. They were produced by the Office for National Statistics for the reporting of small area statistics.

- North East Lincolnshire Ward Boundaries
- Lower-Layer Super Output Area Boundaries



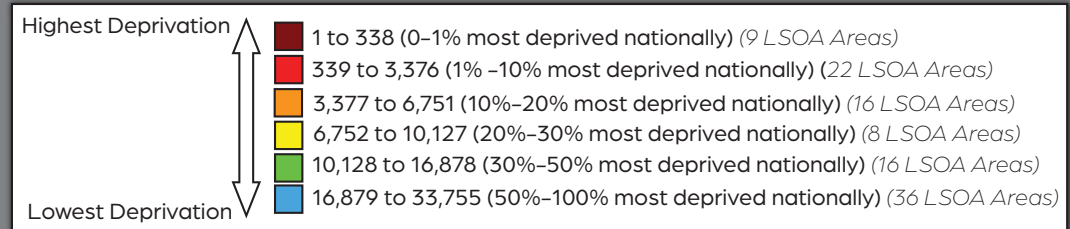
The Barriers to Housing and Services Domain measures the physical and financial accessibility of housing and local services. The indicators fall into two sub-domains: 'geographical barriers', which relate to the physical proximity of local services, and 'wider barriers' which includes issues relating to access to housing such as affordability.

The English Indices of Deprivation 2025 have been constructed for the Ministry of Housing, Communities & Local Government (MHCLG) by Oxford Consultants for Social Inclusion (OCSI) and Deprivation.org.

- Barriers to Housing and Services (9.3%)

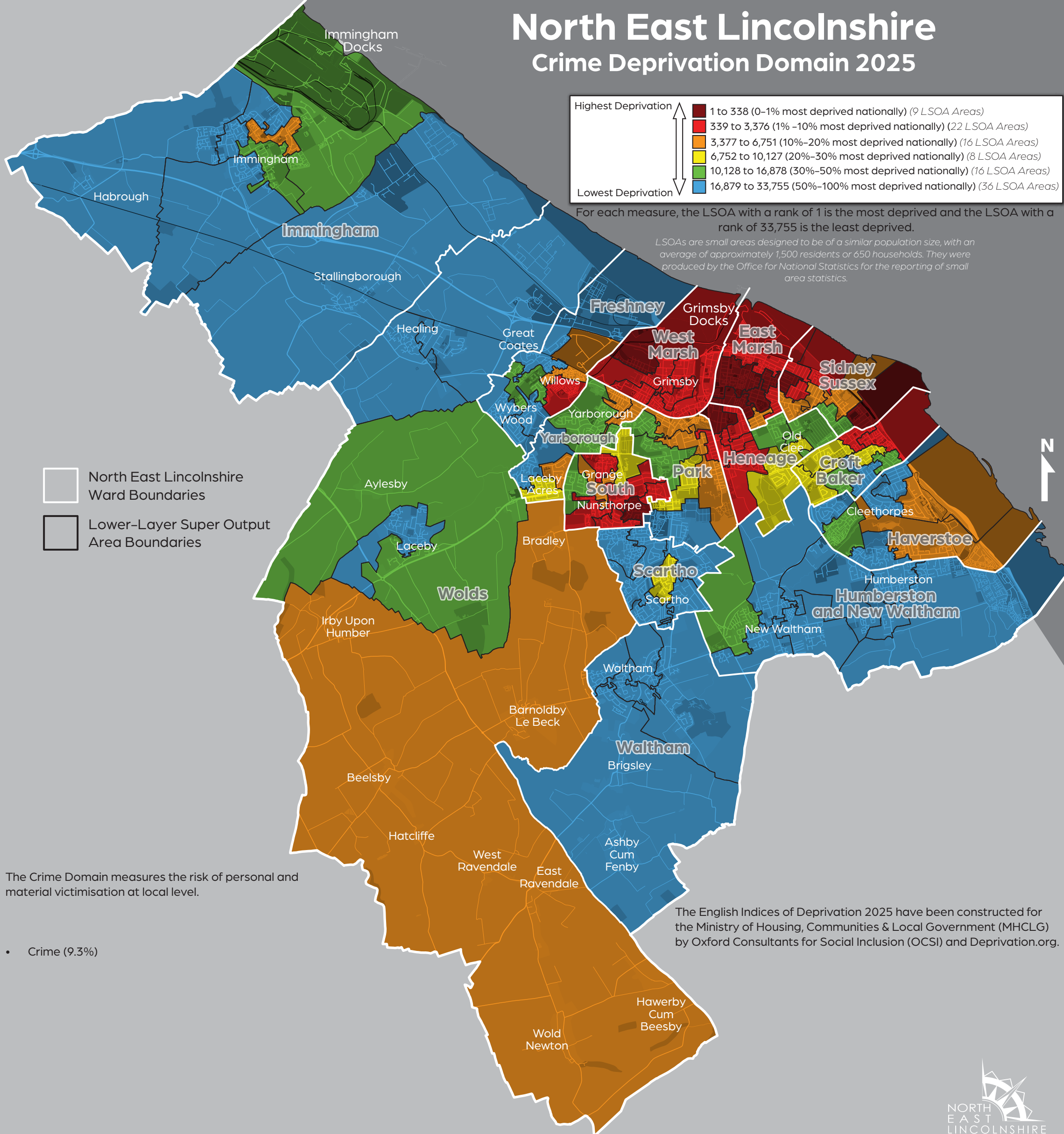
North East Lincolnshire

Crime Deprivation Domain 2025



For each measure, the LSOA with a rank of 1 is the most deprived and the LSOA with a rank of 33,755 is the least deprived.

LSOAs are small areas designed to be of a similar population size, with an average of approximately 1,500 residents or 650 households. They were produced by the Office for National Statistics for the reporting of small area statistics.



North East Lincolnshire Ward Boundaries
 Lower-Layer Super Output Area Boundaries

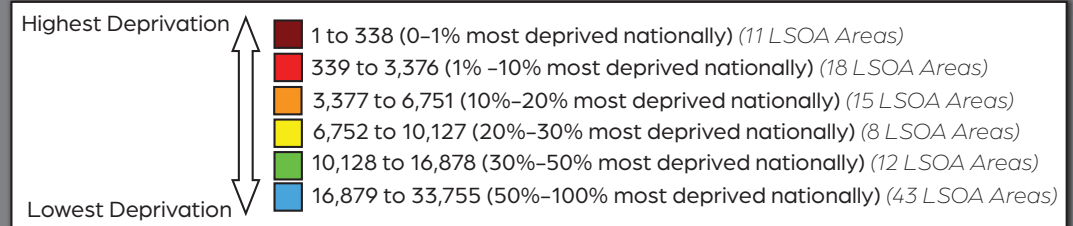
The Crime Domain measures the risk of personal and material victimisation at local level.

- Crime (9.3%)

The English Indices of Deprivation 2025 have been constructed for the Ministry of Housing, Communities & Local Government (MHCLG) by Oxford Consultants for Social Inclusion (OCSI) and Deprivation.org.

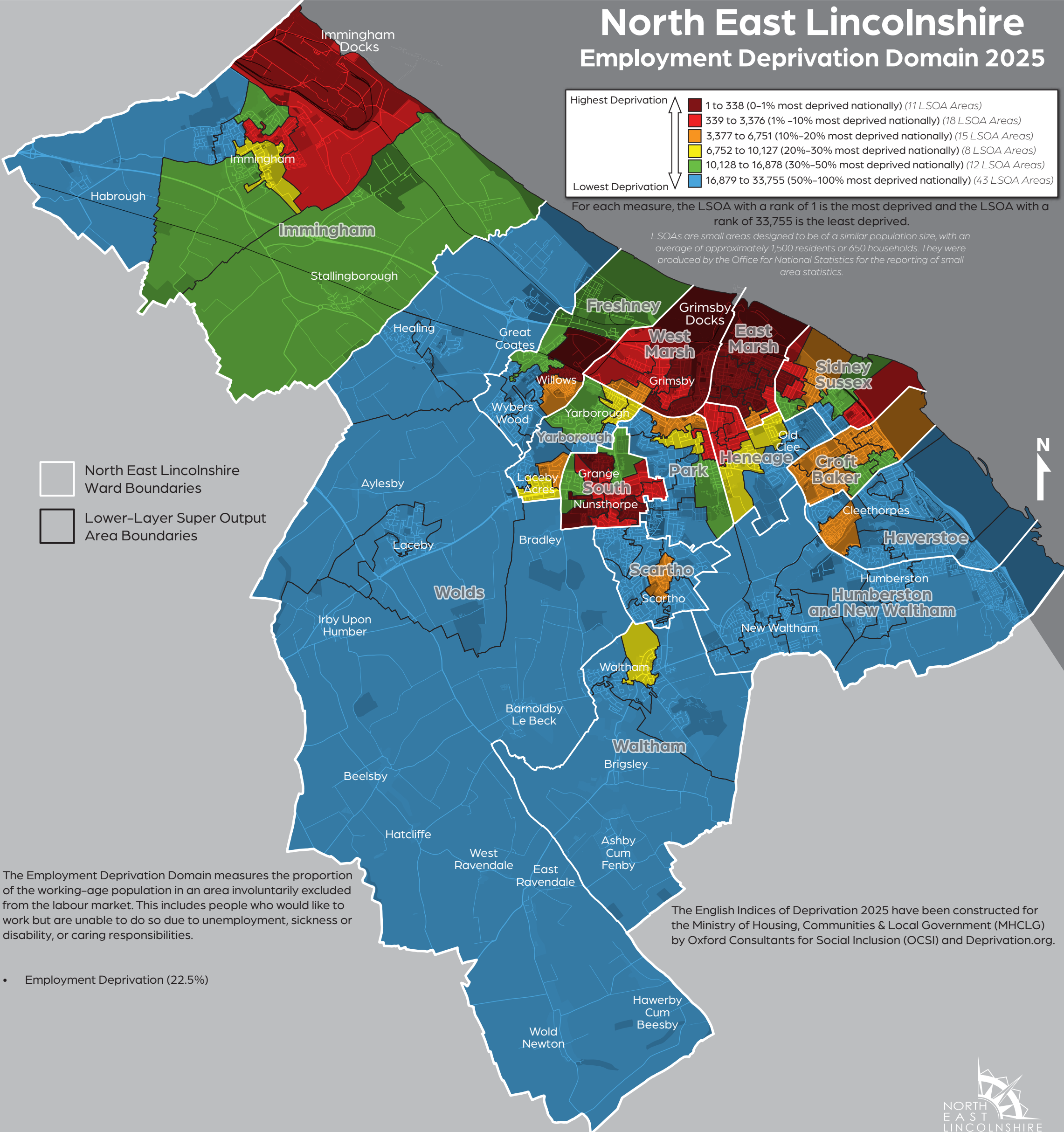
North East Lincolnshire

Employment Deprivation Domain 2025



For each measure, the LSOA with a rank of 1 is the most deprived and the LSOA with a rank of 33,755 is the least deprived.

LSOAs are small areas designed to be of a similar population size, with an average of approximately 1,500 residents or 650 households. They were produced by the Office for National Statistics for the reporting of small area statistics.



- North East Lincolnshire Ward Boundaries
- Lower-Layer Super Output Area Boundaries

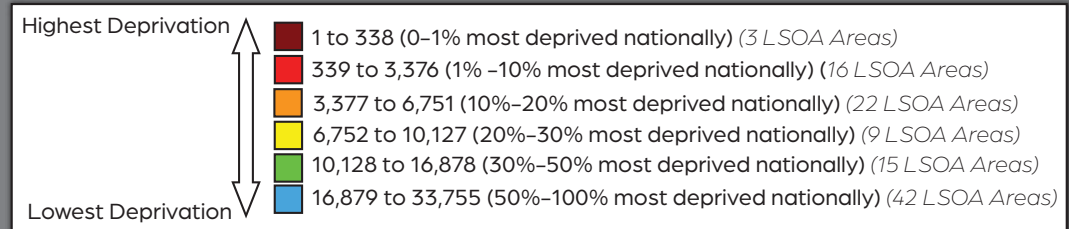
The Employment Deprivation Domain measures the proportion of the working-age population in an area involuntarily excluded from the labour market. This includes people who would like to work but are unable to do so due to unemployment, sickness or disability, or caring responsibilities.

- Employment Deprivation (22.5%)

The English Indices of Deprivation 2025 have been constructed for the Ministry of Housing, Communities & Local Government (MHCLG) by Oxford Consultants for Social Inclusion (OCSI) and Deprivation.org.

North East Lincolnshire

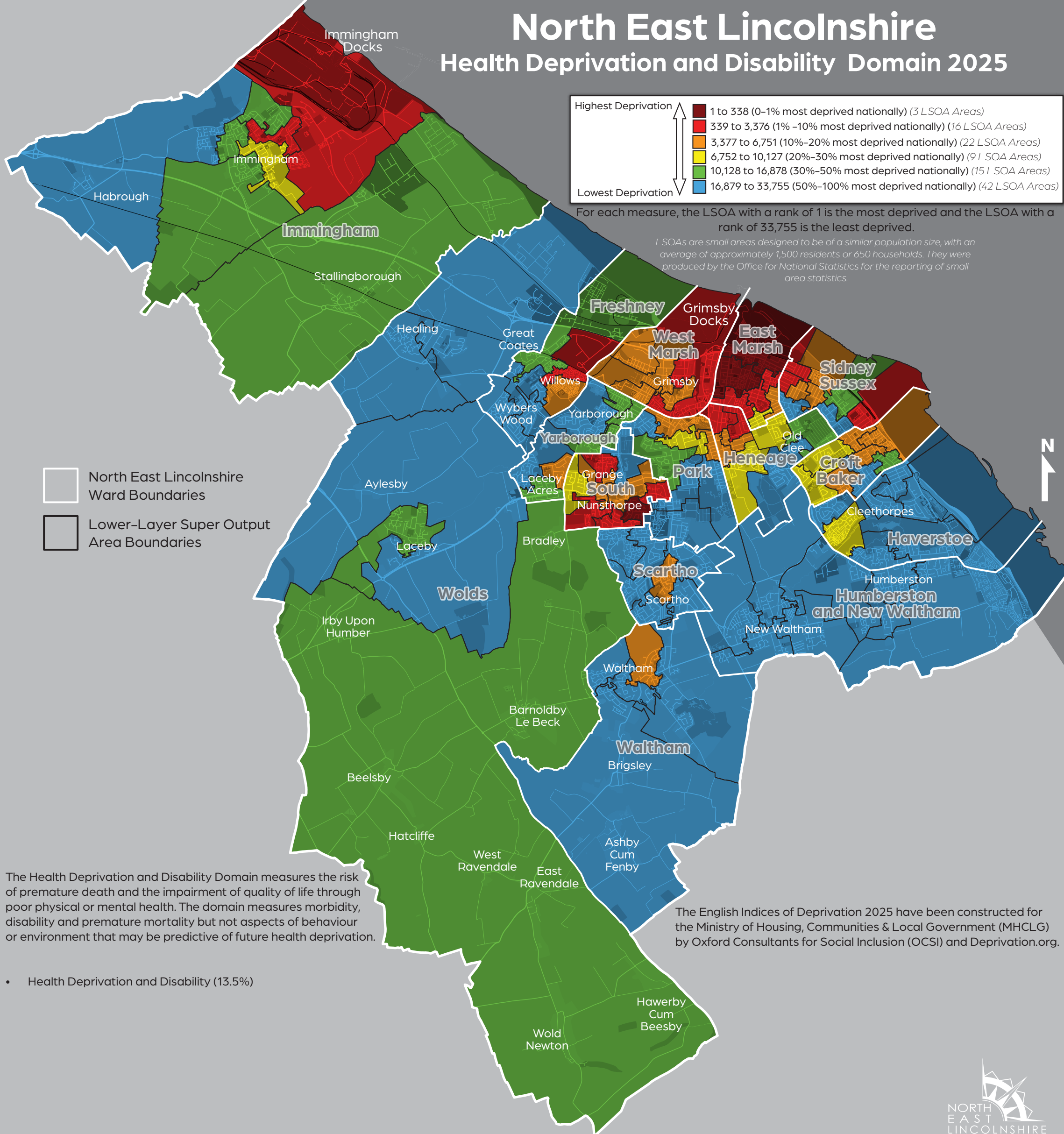
Health Deprivation and Disability Domain 2025



For each measure, the LSOA with a rank of 1 is the most deprived and the LSOA with a rank of 33,755 is the least deprived.

LSOAs are small areas designed to be of a similar population size, with an average of approximately 1,500 residents or 650 households. They were produced by the Office for National Statistics for the reporting of small area statistics.

- North East Lincolnshire Ward Boundaries
- Lower-Layer Super Output Area Boundaries

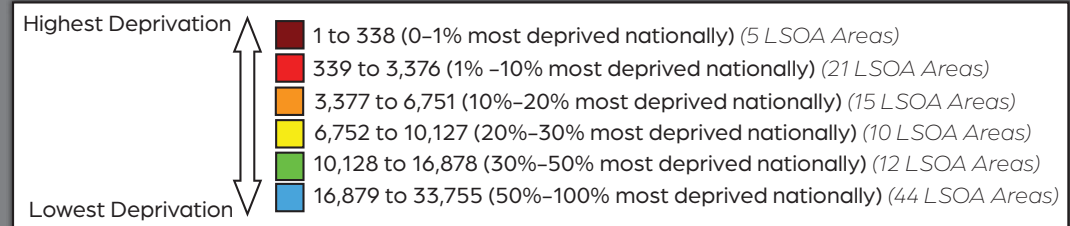


The Health Deprivation and Disability Domain measures the risk of premature death and the impairment of quality of life through poor physical or mental health. The domain measures morbidity, disability and premature mortality but not aspects of behaviour or environment that may be predictive of future health deprivation.

The English Indices of Deprivation 2025 have been constructed for the Ministry of Housing, Communities & Local Government (MHCLG) by Oxford Consultants for Social Inclusion (OCSI) and Deprivation.org.

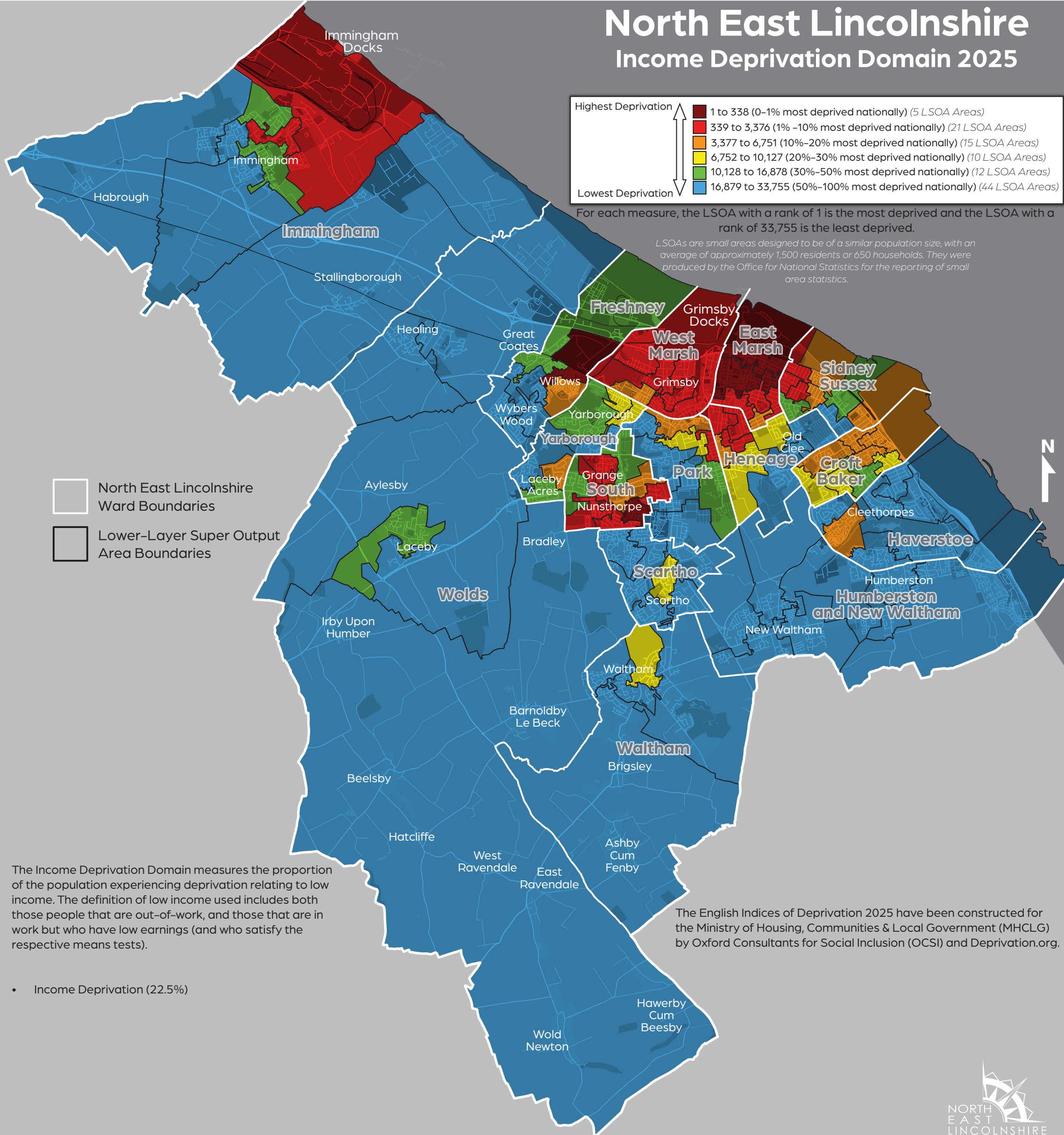
- Health Deprivation and Disability (13.5%)

North East Lincolnshire Income Deprivation Domain 2025



For each measure, the LSOA with a rank of 1 is the most deprived and the LSOA with a rank of 33,755 is the least deprived.

LSOAs are small areas designed to be of a similar population size, with an average of approximately 1,500 residents or 650 households. They were produced by the Office for National Statistics for the reporting of small area statistics.



- North East Lincolnshire Ward Boundaries
- Lower-Layer Super Output Area Boundaries

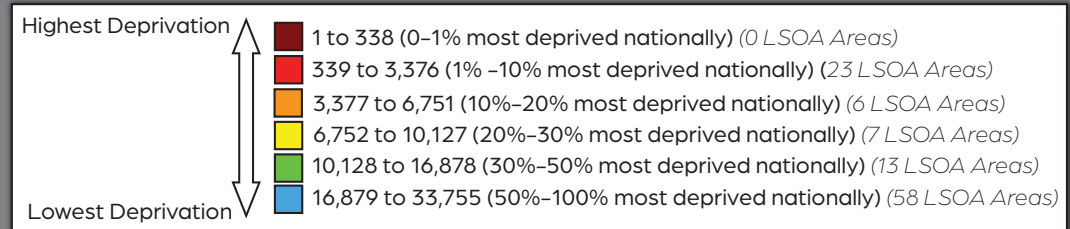
The Income Deprivation Domain measures the proportion of the population experiencing deprivation relating to low income. The definition of low income used includes both those people that are out-of-work, and those that are in work but who have low earnings (and who satisfy the respective means tests).

The English Indices of Deprivation 2025 have been constructed for the Ministry of Housing, Communities & Local Government (MHCLG) by Oxford Consultants for Social Inclusion (OCSI) and Deprivation.org.

- Income Deprivation (22.5%)

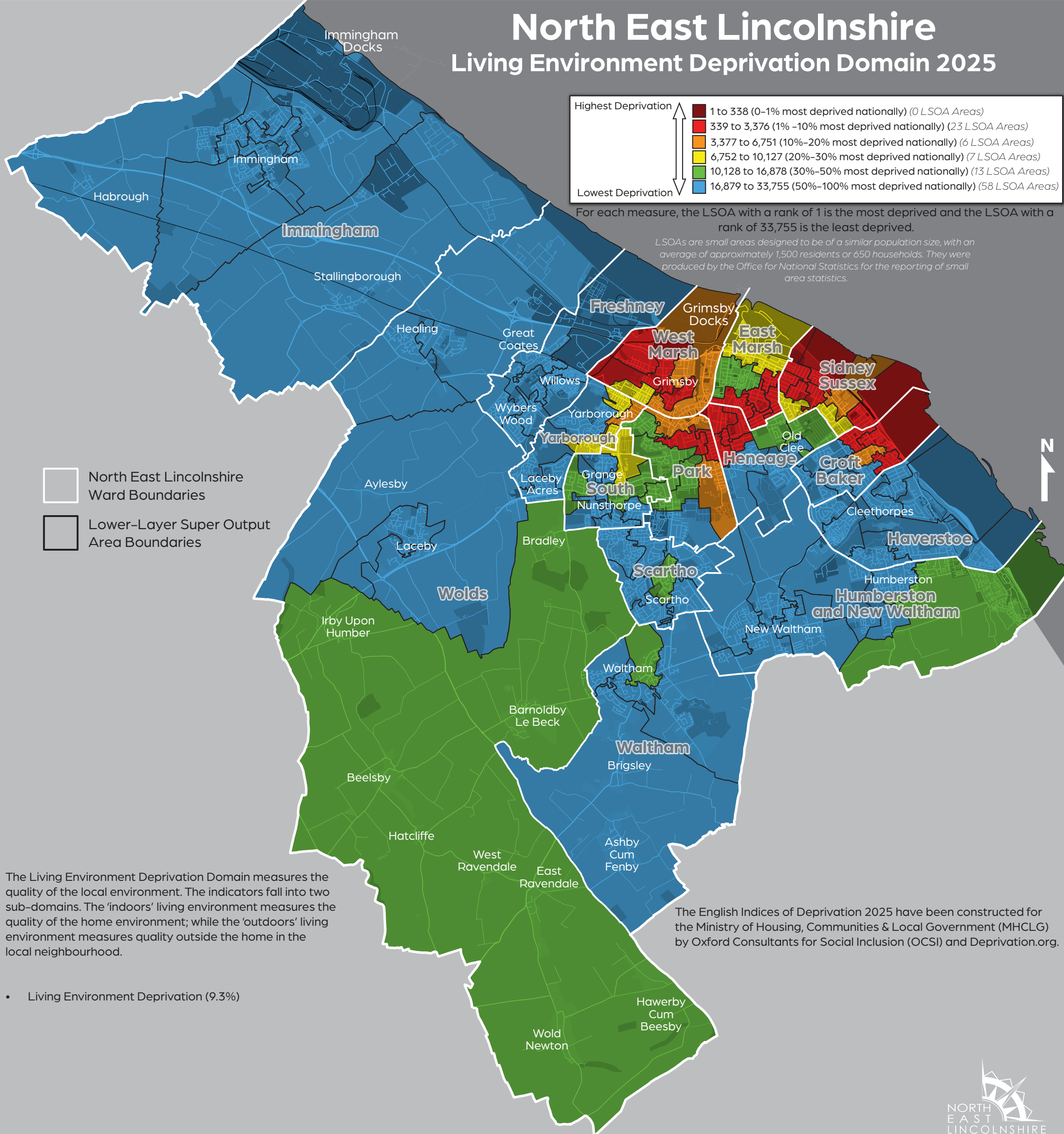
North East Lincolnshire

Living Environment Deprivation Domain 2025



For each measure, the LSOA with a rank of 1 is the most deprived and the LSOA with a rank of 33,755 is the least deprived.

LSOAs are small areas designed to be of a similar population size, with an average of approximately 1,500 residents or 650 households. They were produced by the Office for National Statistics for the reporting of small area statistics.



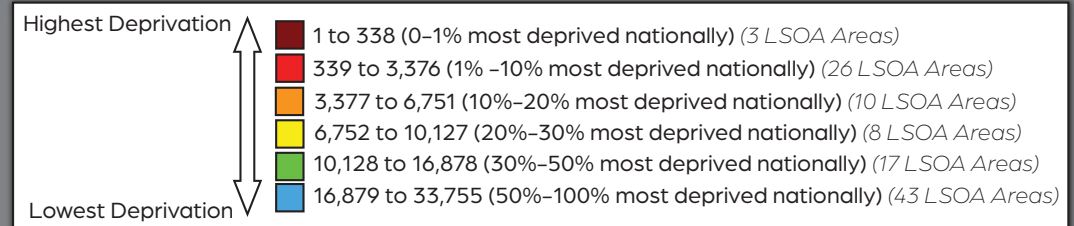
- North East Lincolnshire Ward Boundaries
- Lower-Layer Super Output Area Boundaries

The Living Environment Deprivation Domain measures the quality of the local environment. The indicators fall into two sub-domains. The 'indoors' living environment measures the quality of the home environment; while the 'outdoors' living environment measures quality outside the home in the local neighbourhood.

The English Indices of Deprivation 2025 have been constructed for the Ministry of Housing, Communities & Local Government (MHCLG) by Oxford Consultants for Social Inclusion (OCSI) and Deprivation.org.



- Living Environment Deprivation (9.3%)

North East Lincolnshire Income Deprivation Affecting Children Index (IDACI)



For each measure, the LSOA with a rank of 1 is the most deprived and the LSOA with a rank of 33,755 is the least deprived.

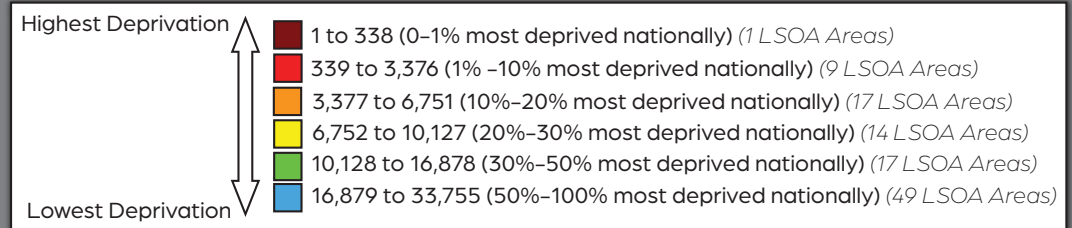
LSOAs are small areas designed to be of a similar population size, with an average of approximately 1,500 residents or 650 households. They were produced by the Office for National Statistics for the reporting of small area statistics.

-  North East Lincolnshire Ward Boundaries
-  Lower-Layer Super Output Area Boundaries

The Income Deprivation Affecting Children Index (IDACI) measures the proportion of all children aged 0 to 15 living in income deprived families. It is a subset of the Income Deprivation Domain which measures the proportion of the population in an area experiencing deprivation relating to low income. The definition of low income used includes both those people that are out-of-work, and those that are in work but who have low earnings (and who satisfy the respective means tests).



The English Indices of Deprivation 2025 have been constructed for the Ministry of Housing, Communities & Local Government (MHCLG) by Oxford Consultants for Social Inclusion (OCSI) and Deprivation.org.

North East Lincolnshire Income Deprivation Affecting Older People Index (IDAOPi)



For each measure, the LSOA with a rank of 1 is the most deprived and the LSOA with a rank of 33,755 is the least deprived.

LSOAs are small areas designed to be of a similar population size, with an average of approximately 1,500 residents or 650 households. They were produced by the Office for National Statistics for the reporting of small area statistics.

-  North East Lincolnshire Ward Boundaries
-  Lower-Layer Super Output Area Boundaries

The Income Deprivation Affecting Older People Index (IDAOPi) measures the proportion of all those aged 60 or over who experience income deprivation. It is a subset of the Income Deprivation Domain which measures the proportion of the population in an area experiencing deprivation relating to low income. The definition of low income used includes both those people that are out-of-work, and those that are in work but who have low earnings (and who satisfy the respective means tests).

The English Indices of Deprivation 2025 have been constructed for the Ministry of Housing, Communities & Local Government (MHCLG) by Oxford Consultants for Social Inclusion (OCSI) and Deprivation.org.